



CENTER CITY DISTRICT PARKS

The Natural Choice for Your Next Event



DILWORTH PARK

Hold Your Event on Philadelphia's Center Stage





Socialize next to a national historic landmark, alongside dancing fountains, stroll the lush lawn, get cozy in our sidebar café with views up the Benjamin Franklin Parkway – mingling can become magical at the center of the city.

WITHIN WALKING DISTANCE

Philadelphia's major office district, the Pennsylvania Convention Center, major hotels, the Avenue of the Arts & the Masonic Temple.

DESCRIPTION

This grand, state-of-the-art park promises a new standard for corporate, social and celebratory functions, and offers the flexibility to accommodate every need. Imagine your networking event, corporate or wedding reception or, milestone birthday party at the center of Center City, adjacent to historic City Hall.

DILWORTH PARK FEATURES

The Fountain

The Fountain at Dilworth is water sculpture set in motion; its streams of water spout at random intervals – a lively accent to your festivities. The fountain jets can be custom-programmed at your discretion.

PNC Terrace

Large crowds find their comfort level at PNC Plaza, an inviting open space adjacent to the café, offering views up the Parkway to the Philadelphia Museum of Art. This terrace can seat over 100 people, while the café makes room for 25 more. Make it your go-to place to forge collegial connections, present to large groups, put on a speaker series--all in tune with the rhythm of the city around you.

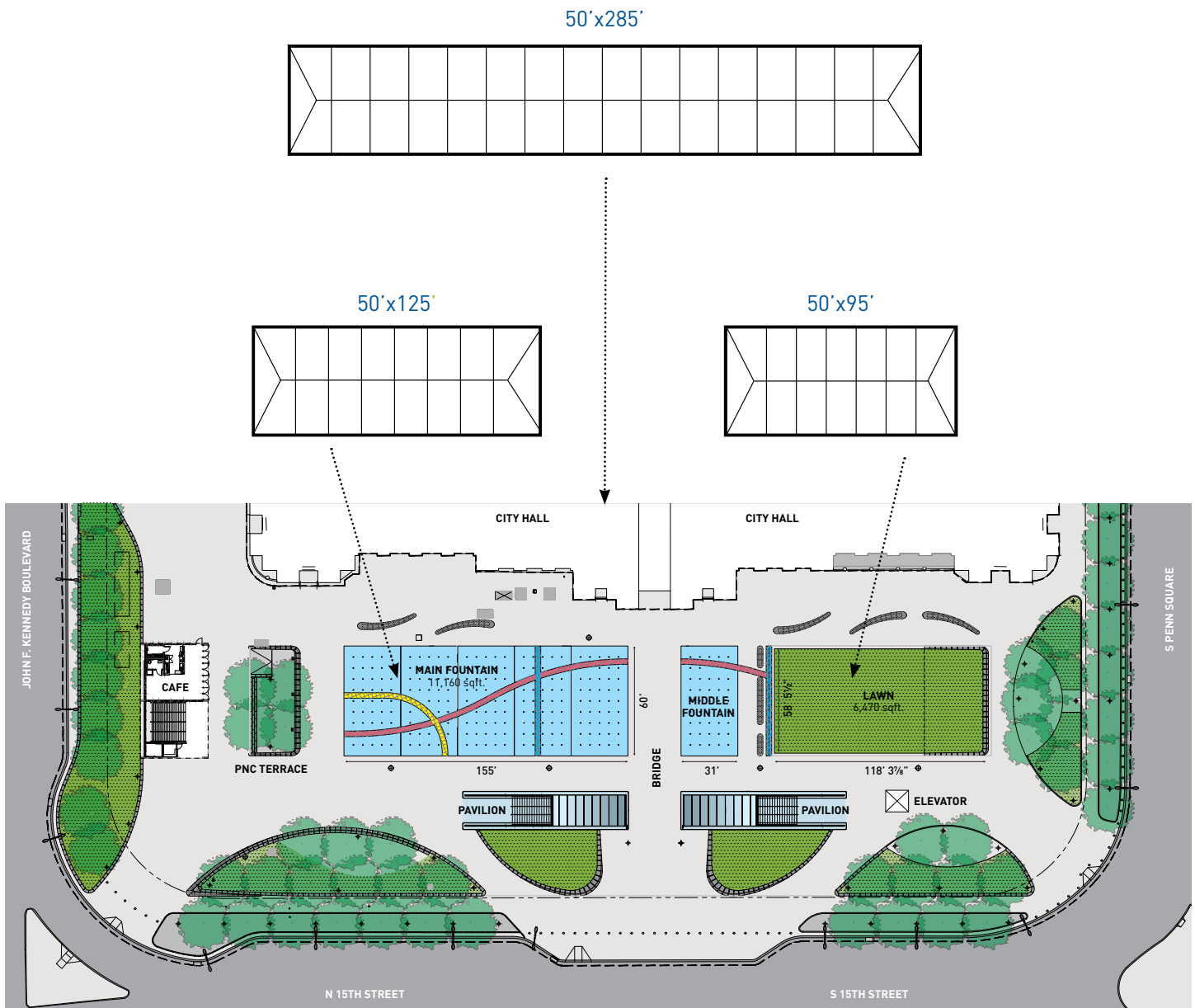
The Albert M. Greenfield Lawn

This green space surrounded by seating areas offers endless ways to entertain. Whether you're planning a company picnic complete with lawn games, a family circle picnic, an outdoor movie screening or a lunchtime concert, the lawn provides a splash of greenery in the city's most vibrant new park.

DILWORTH TENTABLE SPACE

Area	Seated Dinner	Dinner With Dancing/Stage	Theater Style	Reception/Standing Room Only
Lawn	400	300	600	1300
Main Fountain	750	550	1100	2250
Middle Fountain	120	90	200	350
Bridge	100	85	175	340
All Three Spaces + Bridge	1500	1200	2200	4500

TENT CAPACITIES

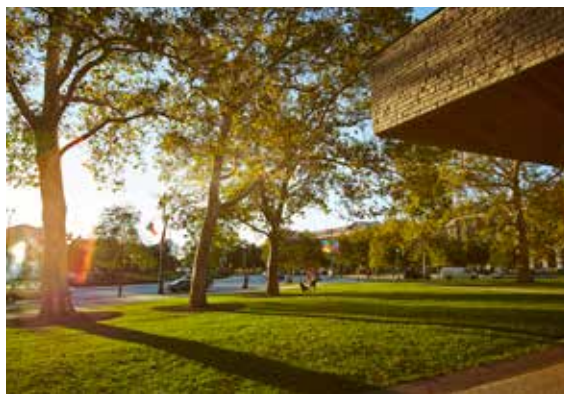
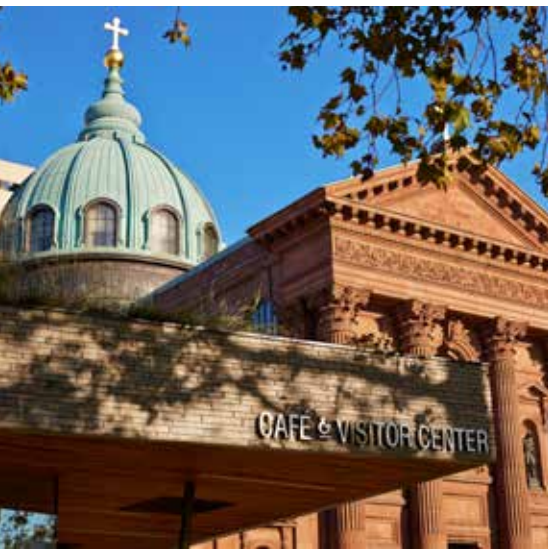


FOR ADDITIONAL INFORMATION AND RENTAL PRICES, PLEASE CONTACT SARAH ANELLO AT 215.440.5507 OR SANELLO@CENTERCITYPHILA.ORG



SISTER CITIES PARK

A Splash Of Green Under the City Lights



SISTER CITIES PARK

18th Street and the Benjamin Franklin Parkway



LOCATED IN LOGAN SQUARE

Positioned between the Basilica of Saints Peter and Paul, Swann Fountain and the Four Seasons Hotel. Within a short walk of The Barnes Foundation, Embassy Suites Hotel, The Franklin Institute, The Academy of Natural Sciences of Drexel University, Free Library of Philadelphia, Philadelphia Museum of Art and all major downtown office buildings.

DESCRIPTION

At the midpoint on the Benjamin Franklin Parkway between City Hall and the Philadelphia Museum of Art, Sister Cities Park adds a picturesque swath of green to the heart of Philadelphia's notable arts and cultural district. From here, panoramic views bring skyscrapers, historic cathedrals and museums into harmony, while the Sister Cities fountain, a unique representation of the world with Philadelphia at

its center, is close enough for adults to touch and children to run through. The fountain's ten geyser-like spouts symbolize our ten sister cities, each positioned according to its global relationship to Philadelphia.

The Park also offers a Children's Discovery Garden at the north end, with a children's wading pool in warm weather months and an interactive play area when the weather turns cool.

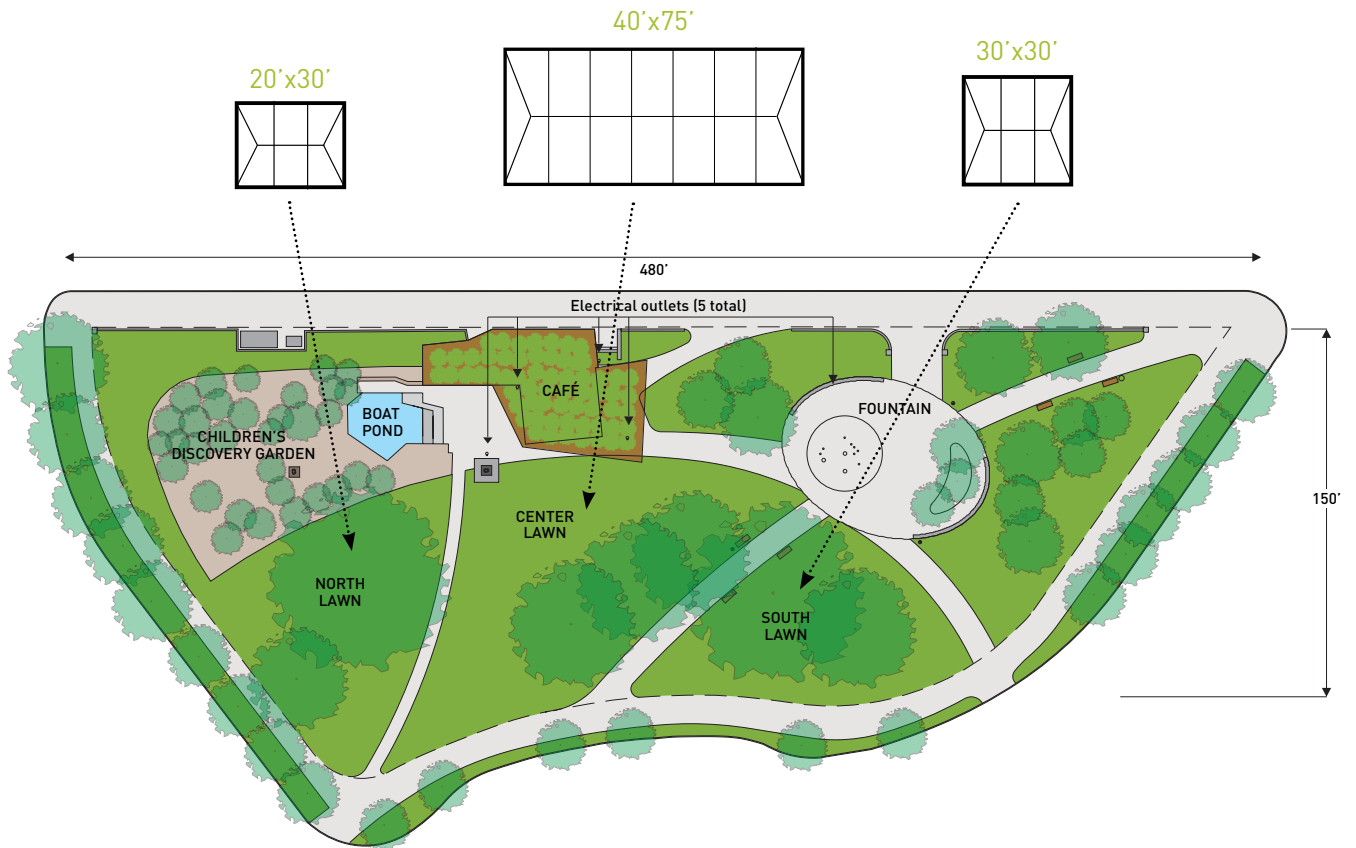
The charm of Sister Cities Park lends itself to everything from children's birthday parties to wedding receptions and rehearsal dinners, from uncommon celebrations to corporate teambuilding exercises. Whatever the occasion, consider this the quintessential spot for an event on the Parkway.

CAPACITY

Area (No Tenting)	Seated Dinner	Dinner With Dancing/Stage	Theater Style	Reception/Standing Room Only									
North Lawn	135	100	200	400									
Center Lawn	270	200	500	800									
South Lawn & Fountain	270	200	500	800									
Discovery Garden	N/A	N/A	N/A </tr <tr> <td>Café</td> <td>30</td> <td>N/A</td> <td>50</td> <td>50</td> </tr> <tr> <td>Entire Park</td> <td>600</td> <td>500</td> <td>1000</td> <td>2000</td> </tr>	Café	30	N/A	50	50	Entire Park	600	500	1000	2000
Café	30	N/A	50	50									
Entire Park	600	500	1000	2000									

TENT CAPACITIES

Tent Size	Sit Down Dinner (Tables & Chairs)	Sit Down Dinner With Dancing (Tables, Chairs, & Dancing)	Theatre or Ceremony Style (Chairs Only)	Reception (Standing Room Only)
20'x30'	30 to 40	24 to 30	50 to 75	50 to 120
20'x60'	60 to 80	48 to 60	100 to 150	100 to 240
30'x30'	45 to 60	36 to 45	75 to 112	75 to 180
40'x60'	120 to 160	96 to 120	200 to 300	200 to 480
40'x75'	150 to 200	120 to 150	250 to 375	250 to 600
60'x80'	200 to 260	160 to 200	330 to 500	330 to 800

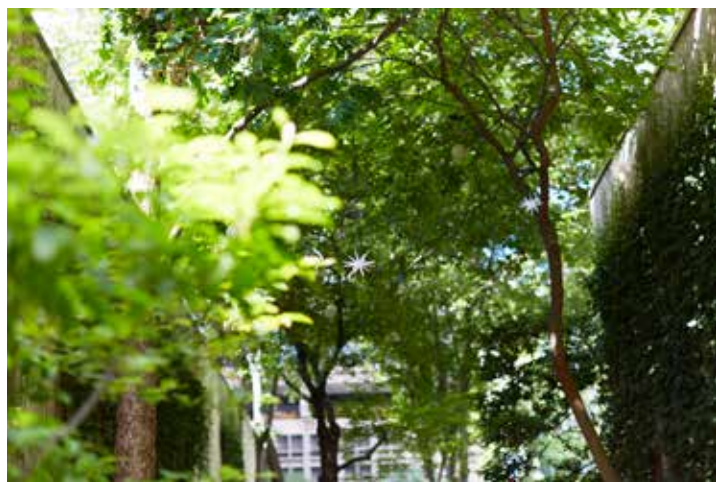


FOR ADDITIONAL INFORMATION AND RENTAL PRICES, PLEASE CONTACT SARAH ANELLO AT 215.440.5507 OR SANELLO@CENTERCITYPHILA.ORG



JOHN F. COLLINS PARK

A Tranquil Oasis in the Heart of the City



JOHN F. COLLINS PARK

JOHN F. COLLINS PARK

1707 Chestnut Street - Between Chestnut and Ranstead Streets



WITHIN WALKING DISTANCE

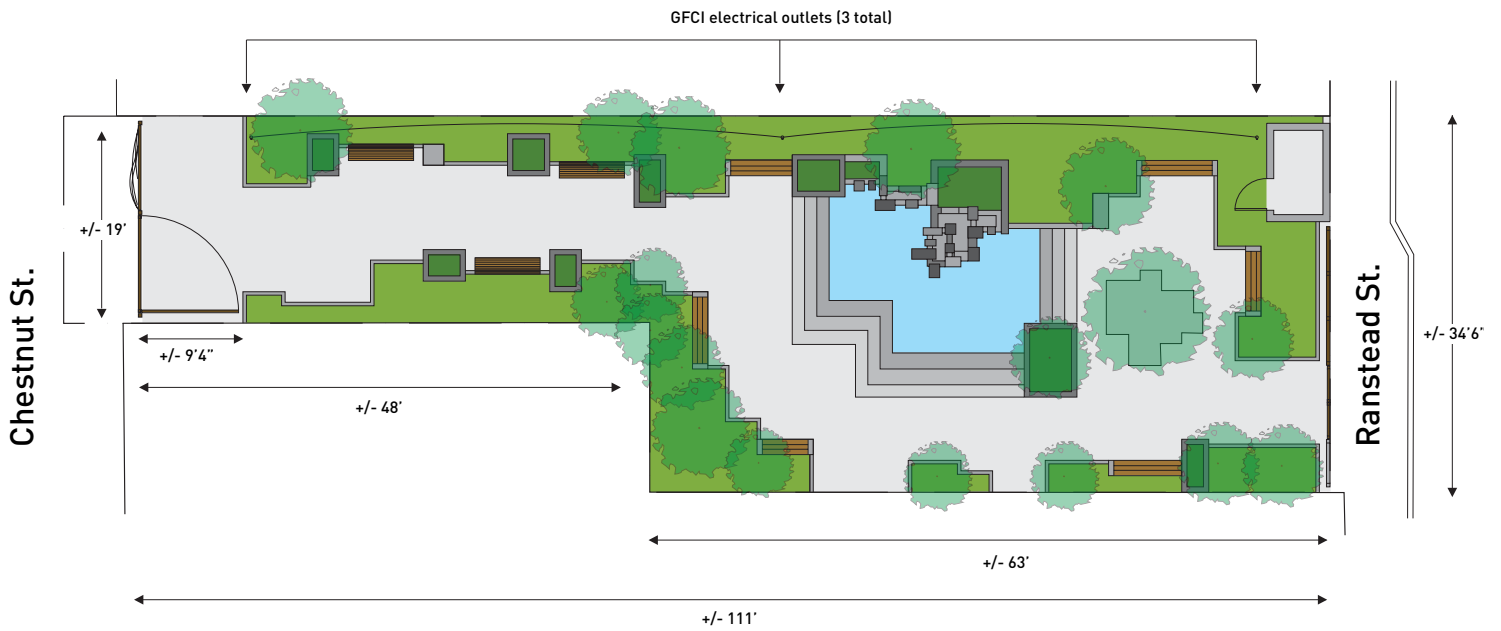
Westin, Sofitel, Palomar Hotels, all major downtown office buildings, Rittenhouse Row shopping district.

DESCRIPTION

John F. Collins Park is a hushed, landscaped hideaway tucked within Center City's bustling business district. Adjacent to one of Center City's busiest streets, it can now

be a private haven for you and your guests. The entrance from Chestnut Street leads through a wrought iron gateway sculpted with whimsical animal life. Inside, you're transported to a dreamlike garden defined by miniature fountains, blossoming flowers and cozy stone benches. This hidden gem is home to elegant cocktail parties, small receptions and intimate wedding ceremonies – making indelible memories along the way.

John F. Collins Park	Seated Dinner	Dinner with Dancing	Theater Style	Maximum
Capacities	60	40	90	100

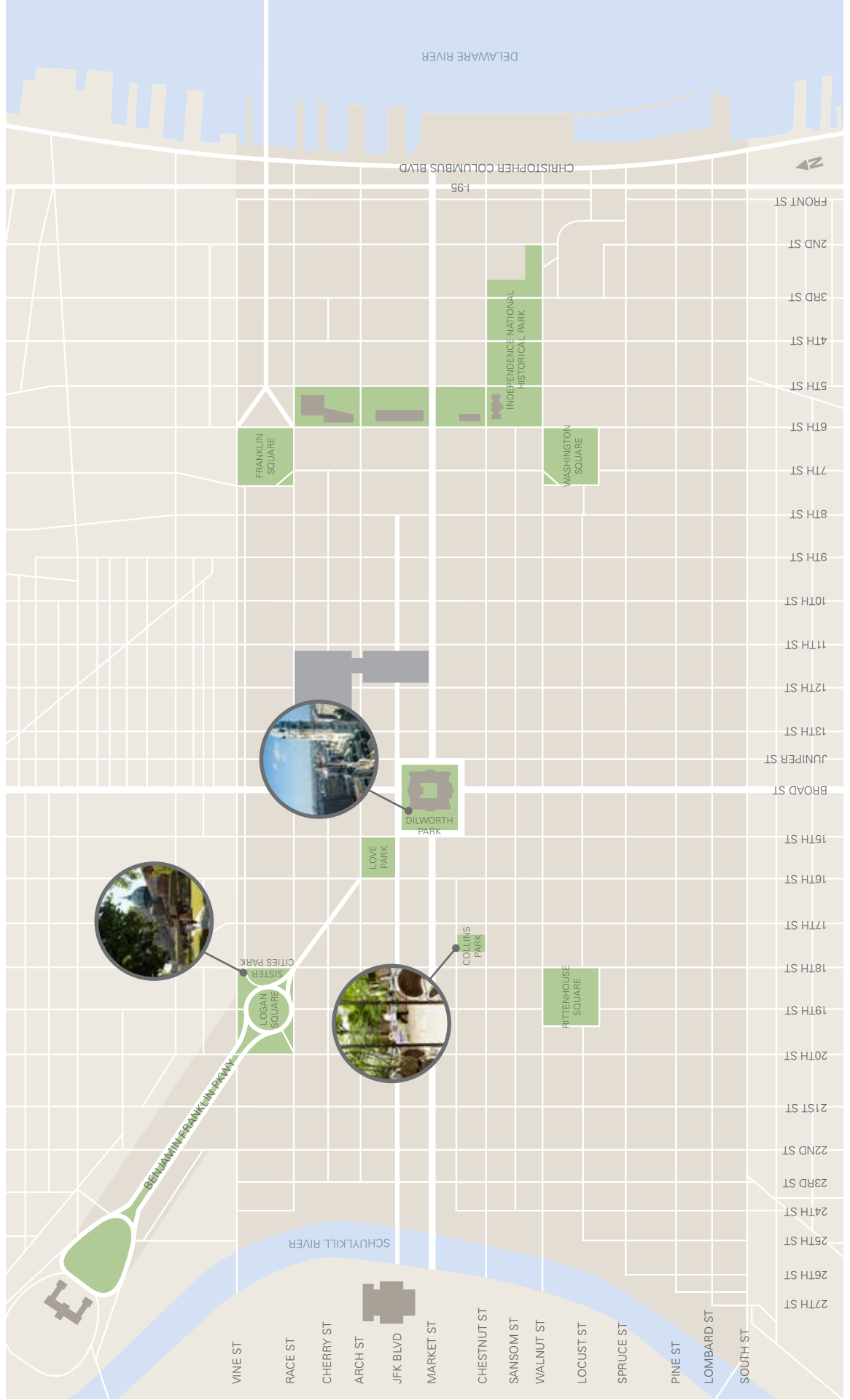


CENTER CITY MAP

DILWORTH PARK

SISTER CITIES PARK

JOHN F. COLLINS PARK



Philadelphia's Center City District extends this invitation to book your next special event at one of our city's finest parks and plazas – ideal outdoor settings that add character and personality to any spring, summer or fall get-together. From book readings or corporate gatherings to wine tastings or weddings, come celebrate in signature style with the Philadelphia skyline as your breathtaking backdrop.



For Additional Information please contact

Center City District
660 Chestnut Street
Philadelphia PA, 19106
215.440.5500

WWW.CCDPARKS.ORG